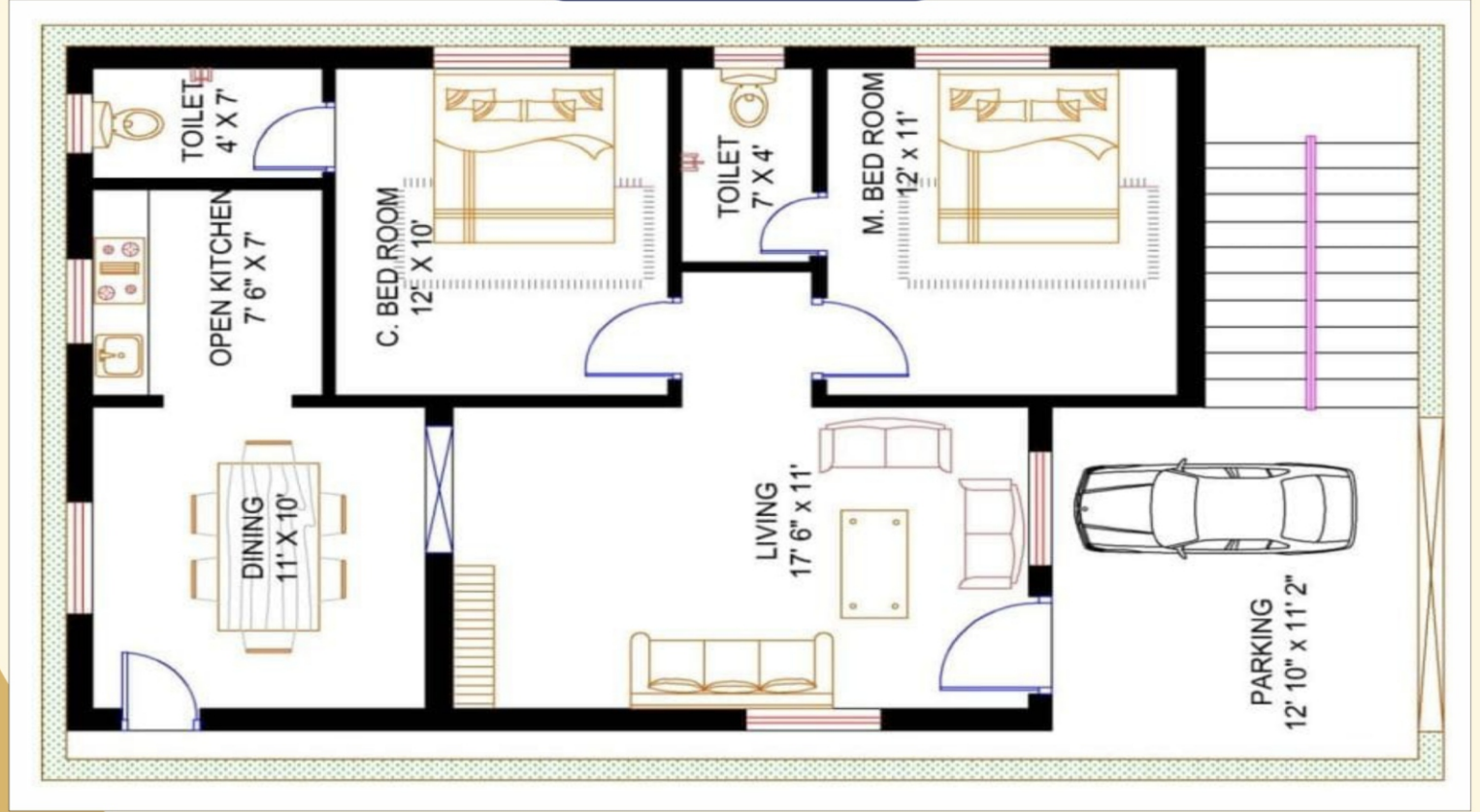


Floor Plans



Plot No. 1523, MNR Enclave Road No.71, Uppal Bhagayath, Uppal, Medchal - Malkajigiri, Hyderabad - 500039.

NOTE : This brochure is only a conceptual presentation. Developers reserve the right to change or alter the plan time to time, as deemed fit.

Any queries please contact:

Project by:

SRI RAMANJANEYA

Builders & Developers

Marketing by:

SDP

SRI DATTA PROPERTIES

APPROVED **hmda** Growing Global

TG RERA TELANGANA STATE REAL ESTATE REGULATORY AUTHORITY

L.P.NO. 011986/LO/HMDA/2025

Skanda Hills

@GHATKESAR, NFC NAGAR

Hill View Villa Plots

DELUXE INDEPENDENT HOUSES FOR SALE @GHATKESAR

JUST PAY Rs. 5 Lakhs (135 Sq yds)

Starts from Rs. 53 Lakhs Only

*You are not buying a house,
You are buying a lifestyle*



L.P.NO. 011986/LO/HMDA/2025



Skanda Hills

@GHATKESAR, NFC NAGAR

Hill View Villa Plots



Location Highlights

- Behind NFC Colony & Kendriya Vidyalaya School
- Under Ghatkesar Municipality Limits
- Near by Hyderabad to Warangal highway
- Very Close to Princeton Institute of Engineering and Technology
- 2 min drive from ACE Engineering College & Mega Eng. College
- 2 min TGSWREIS Degree & PG College For Women
- 3 min drive from Dehli Public School & Rockwood International School
- 4 min drive from Outer Ring Road (ORR Exit - 9)
- 5 min drive from Ghatkesar MMTS
- 5 min drive from Proposed Madharam IT Sez
- 5 min drive from Anurag University & VBIT
- 7 min drive from AIIMS Bibinagar
- 10 min drive from Singapore Township
- 10 min drive from Infosys & Raheja Mind Space
- 15 min drive from Cherlapally Railway Station
- 15 min drive from Swarnagiri Temple Bhuvanagiri
- 20 min drive from Yadadri Temple
- 20 min drive from Uppal Metro Station

Specifications

Framework

R.C.C. Framed Structure

Walls

Super Structure with two coats plastering with luppam finish in hall and bedrooms

Main Doors

Teak Wood frame with polished teak wood paneled shutters with brass fittings

Kitchen

Granite top platform with sink and glazed tile dadoing up to 2'0" height.

Doors Windows

N.T. Wood frames for doors and windows with flush doors and teak wood shutters windows

Flooring

Vitrified tile / Marble flooring with 4" skirting

Painting

Main Door and window with polish. All other with enamel paint external walls with ACC and internal walls and ceiling with OBD acrylic paint

Electrical

Concealed copper wiring with adequate Light, Fan and power plug for A/c, Geyser, Fridge, T.V. Telephone & computer points

Water Supply

CPVC with standard final fittings

Shelves

Shelves in kitchen and provision for other rooms

Toilets

One Indian WC, on European WC and one wash basin of standard make, one in attached toilet and one in dining with light colored vitreous sanitary ware, glazed tiles dado up to 6'0 height in all toilets with ceramic flooring

Project Highlights

- Grand Entrance Arch
- Clear Title All round compound wall
- 100' & 30' Wide Internal CC Roads
- With Street Lighting
- Overhead Water Tank
- Underground Drainage
- Children Park Area with play Equipments
- Designer Landscaping
- Avenue plantation & Footpath
- Water harvesting pits
- 24/7 Security
- 100% Vasthu & Spot Registration

